



Alaska Native Tribal Health Consortium Business Resource Center NEWSLETTER

Business Office and
Coding Support

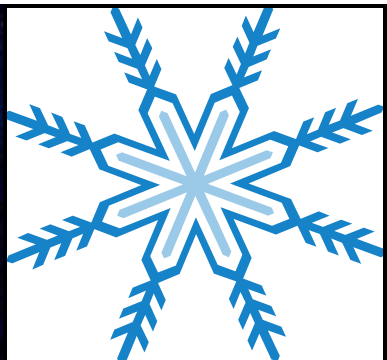
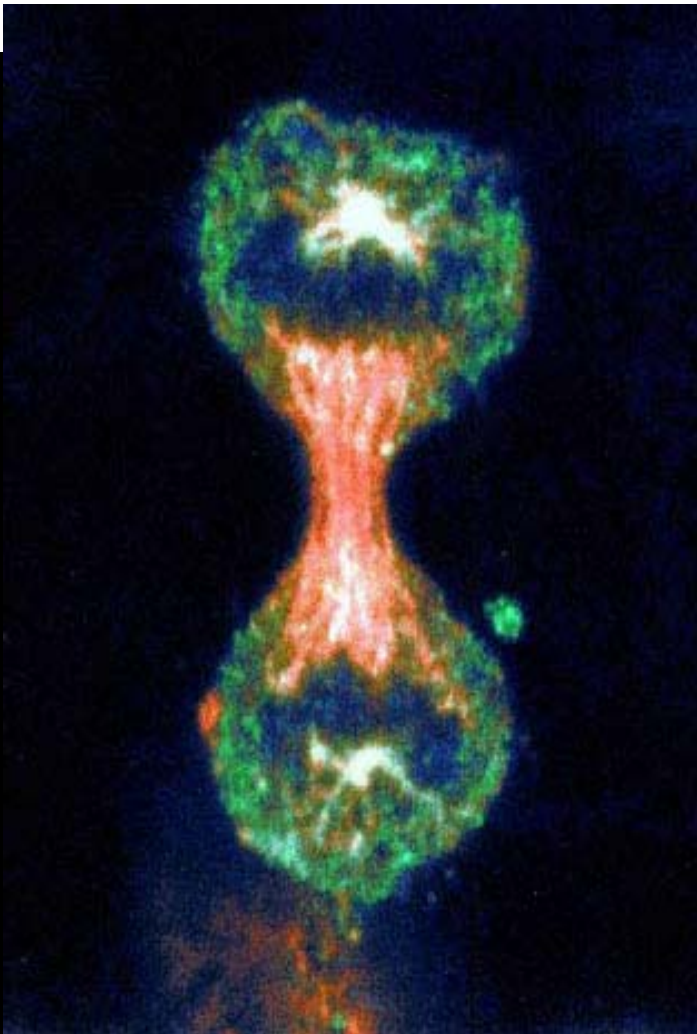
Volume 16, Issue 1
January 31, 2007

Services Provided by the Business Resource Center

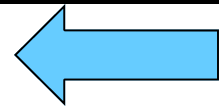
- Business Office Training to include medical billing, dental billing and oversight. (Customized, on-site)
- Analysis of accounts receivable
- **Coding**
- **CODING**
- **CODING**
- **Yes, we can code for you!**
- Coding Audits
- Medical & Dental Billing Support

BRC MISSION STATEMENT

To support, educate and train members of the Alaska Tribal Health System in coding, reimbursement and revenue cycle management, thereby empowering tribal facilities to sustain their operations and improve cash flow.



JANUARY IS NATIONAL CERVICAL HEALTH AWARENESS MONTH



ANY IDEA
WHAT THIS IS?
IT IS A CERVICAL
CANCER CELL

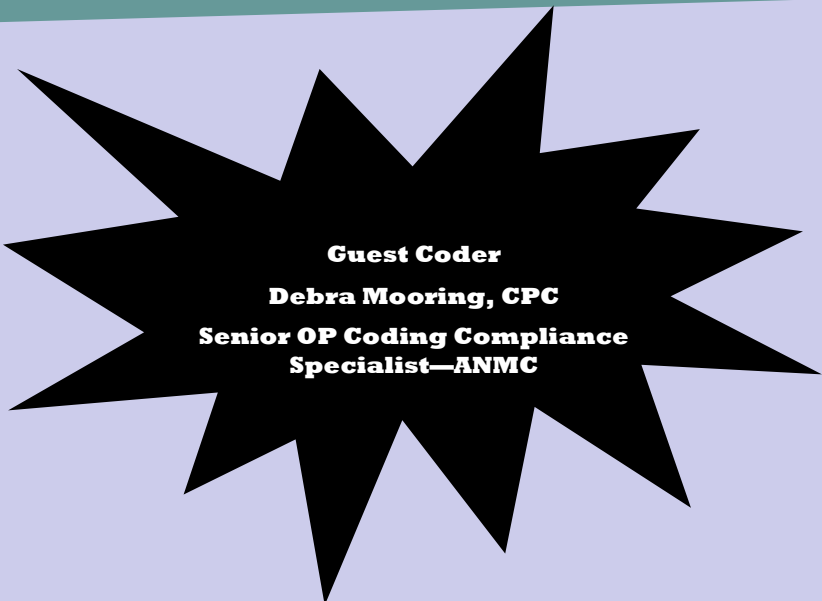
Coding Quiz

- A 30 year old patient comes back to the clinic for a PAP smear to confirm findings of a recent normal smear following initial abnormal smear

What is the correct code?

1. V76.2
2. V72.32
3. V76.31

Answer on page 2





To Code or Not to Code:

That is the question....

Article this month is by Kevin Maier CPC.

Coder's Corner



Article this month is by Kevin Maier CPC.

This month we'll be looking at some information relating to Cervical Cancer. I will provide some definitions and offer some suggestions for common code sets. There is a lot of information relating to Cervical Cancer and hopefully this article will be a spring board to assist your study and comprehension of the topic. So let's look at those definitions and code sets.

Screening:

A screening PAP smear is for a patient with no current complaints related to the female genital tract (such as bleeding, pain, discharge, pelvic mass, prolapse, etc.) and has ***NEVER IN HER ENTIRE LIFETIME*** had a gynecologic malignancy, dysplasia or an abnormal PAP smear. Medicare will reimburse only once every three (3) years for a screening PAP smear.

Screening ICD-9 Code:

V76.2 Routine cervical PAP

V72.31 Routine gynecological examination

High Risk Screening:

A high risk PAP smear is the same as a screening PAP smear in that there are no current GYN complaints; history of malignancy, dysplasia, or abnormal PAP smear, the difference is that there are risk factors present for developing cervical cancer (usually sexual risk factors). It is very unusual for a Medicare patient to fall into the high risk-screening category. A common cause of mistakes in marking the correct category or PAP smear is assigning a patient who has had a prior abnormal PAP smear, dysplasia, or cancer to the high risk screening category. This is incorrect by HCFA terminology. These smears should be indicated as diagnostic PAP smears.

High Risk Screening ICD-9 Codes:

V08 Asymptomatic HIV infection status

760.76 Diethylstilbestrol (DES) exposure in utero

V69.2 Lifestyle problem with high risk sexual behavior

V15.89 Personal history presenting hazards to health

V12.09 Personal history of infectious and parasitic disease

Diagnostic:

A patient who has had a gynecologic malignancy, dysplasia or any type of abnormal PAP smear (including ASCUS) will always have diagnostic PAP smears, even if these conditions are in the distant past. A diagnostic PAP smear is one "from patients with previous cancer of the cervix, uterus, or vagina that has been or is presently being treated; previous abnormal PAP smear; any abnormal findings of the vagina, cervix, uterus, ovaries, or adnexa; any significant complaint by the patient related to the female reproductive system; and any signs or symptoms that might, in the physician's judgment, reasonably be related to a gynecologic disorder."

Diagnostic PAP smears must be accompanied by the supporting ICD-9 code (see list on page 3). A diagnostic PAP smear will be reimbursed by Medicare each year.

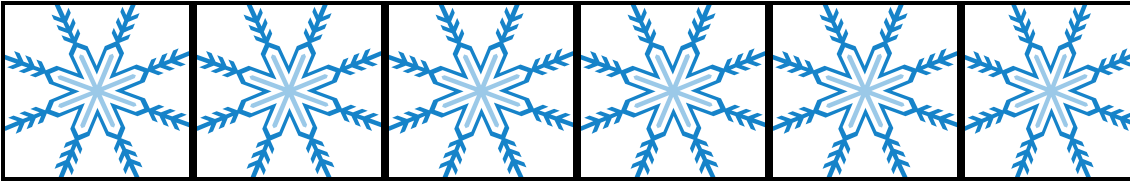
ARTICLE CONTINUED ON PAGE 3

ANSWERS TO CODING QUIZ ON PAGE 1:

The correct answer is V72.32—GYN Exam, encounter for PAP cervical smear to confirm findings of recent normal smear following initial abnormal smear.

IF YOU WOULD LIKE TO BE A GUEST CODER, SEND US YOUR QUIZ QUESTIONS/ANSWERS. WE'LL PUBLISH YOUR PHOTO ALONG WITH IF YOU SEND ONE AND

YOU'LL BE FAMOUS!



Diagnostic ICD-9 Codes:

- 627.3 Postmenopausal atrophic vaginitis
- 622.1x (code set) Cervical dysplasia (CIN/SIL)
- 622.0 Cervical ectropion/erosion
- 622.7 Mucous polyp of cervix (Cervical/endocervical polyp)
- 616.0 Cervicitis & endocervicitis
- 233.1 Carcinoma in situ of cervix uteri (CIN 3/CIS)
- 078.1X Unspecified viral warts Condyloma/HPV
- V10.40 History of gyn tract malignancy
- 626.9 Menstrual disorder, NOS
- 789.30 Abdominal/pelvic swelling/mass/lump, unspecified site
- 625.9 Unspecified symptom associated with female genital organs (Pelvic Pain)
- 627.1 Postmenopausal bleeding
- 627.2 Symptomatic menopausal or female climacteric states
- 627.4 Symptomatic states associated with artificial menopause
- 795.0x (code set) Previous abnormal Pap smear
- 618.1 Uterine prolapse/cystocele/rectocele
- 623.0 Vaginal dysplasia (VAIN/SIL)
- 616.10 Vaginitis
- 180.x (code set) Malignant neoplasm of cervix uteri (Cervical cancer)

Well if you made it this far, congratulation. This is only a small portion of information relating to Cervical Cancer. The BRC is always here (pending funding) to assist you with any coding or billing question that may arise, so please feel free to contact us by any means listed in this newsletter. Remember to think healthy both physically and fiscally.

Some of the information in this article was provided by:

UNC Chapel Hill Pathology Dept.

<http://www.pathology.unc.edu/>

How to contact the BRC (Business Resource Center):

*Cheryl Skiffington, CCA
(907)729-2902 or
cskiffington@anmc.org*

TO LEARN MORE ABOUT CERVICAL CANCER, VISIT THESE WEBSITES:

www.acog.org

That's the American College of Obstetricians and Gynecologists—they have a great website with the new 2007 ICD-9-CM and CPT codes.

www.nccc-online.org

That's the National Cervical Cancer Coalition

and, last but not least

www.cancer.org

The American Cancer Society