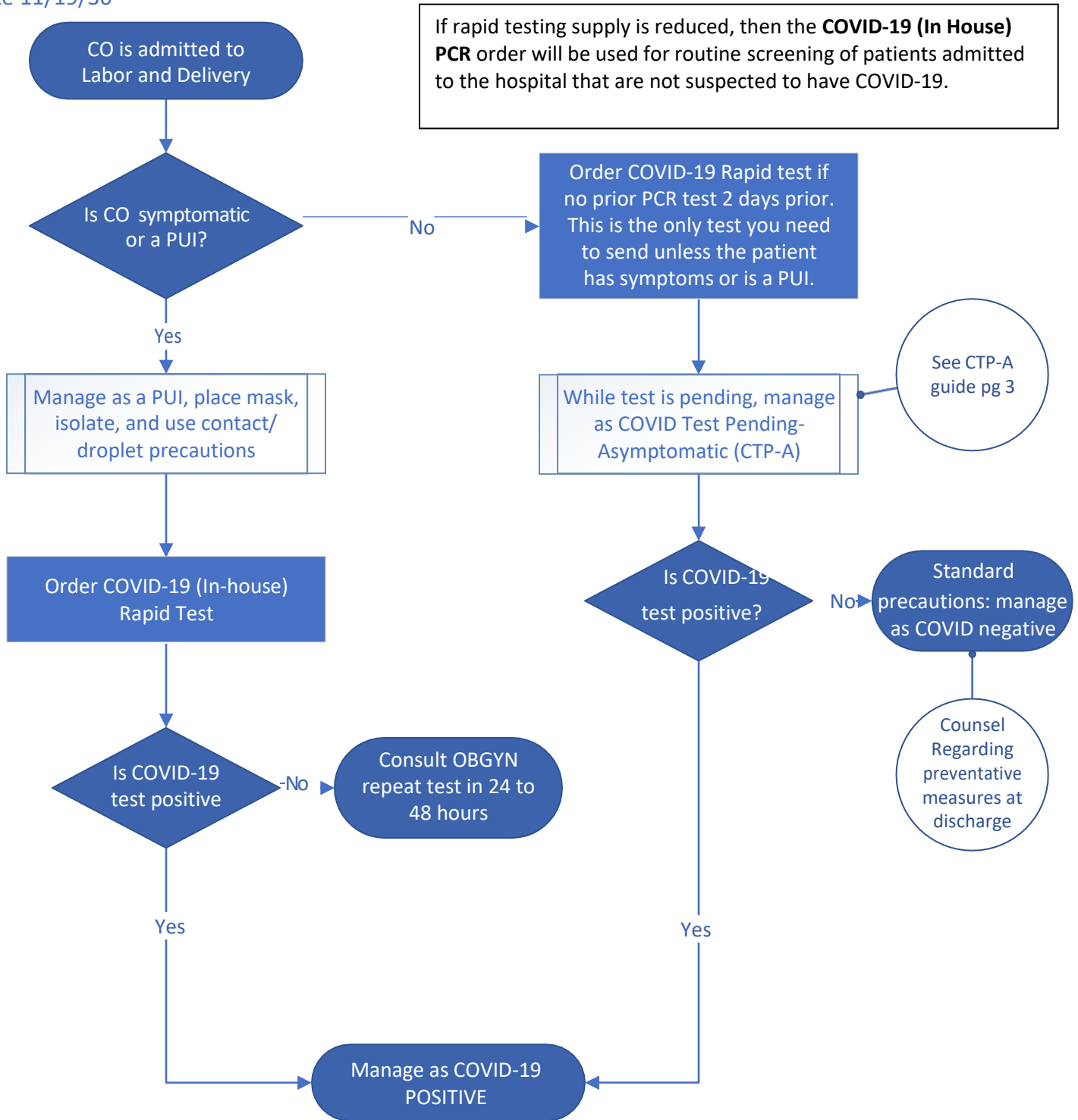


COVID-19 Testing Upon Admission To Labor and Delivery

Purpose: To give guidance on Universal COVID-19 Testing and associated precautions

Update 11/19/30



COVID-19 Positive Management:

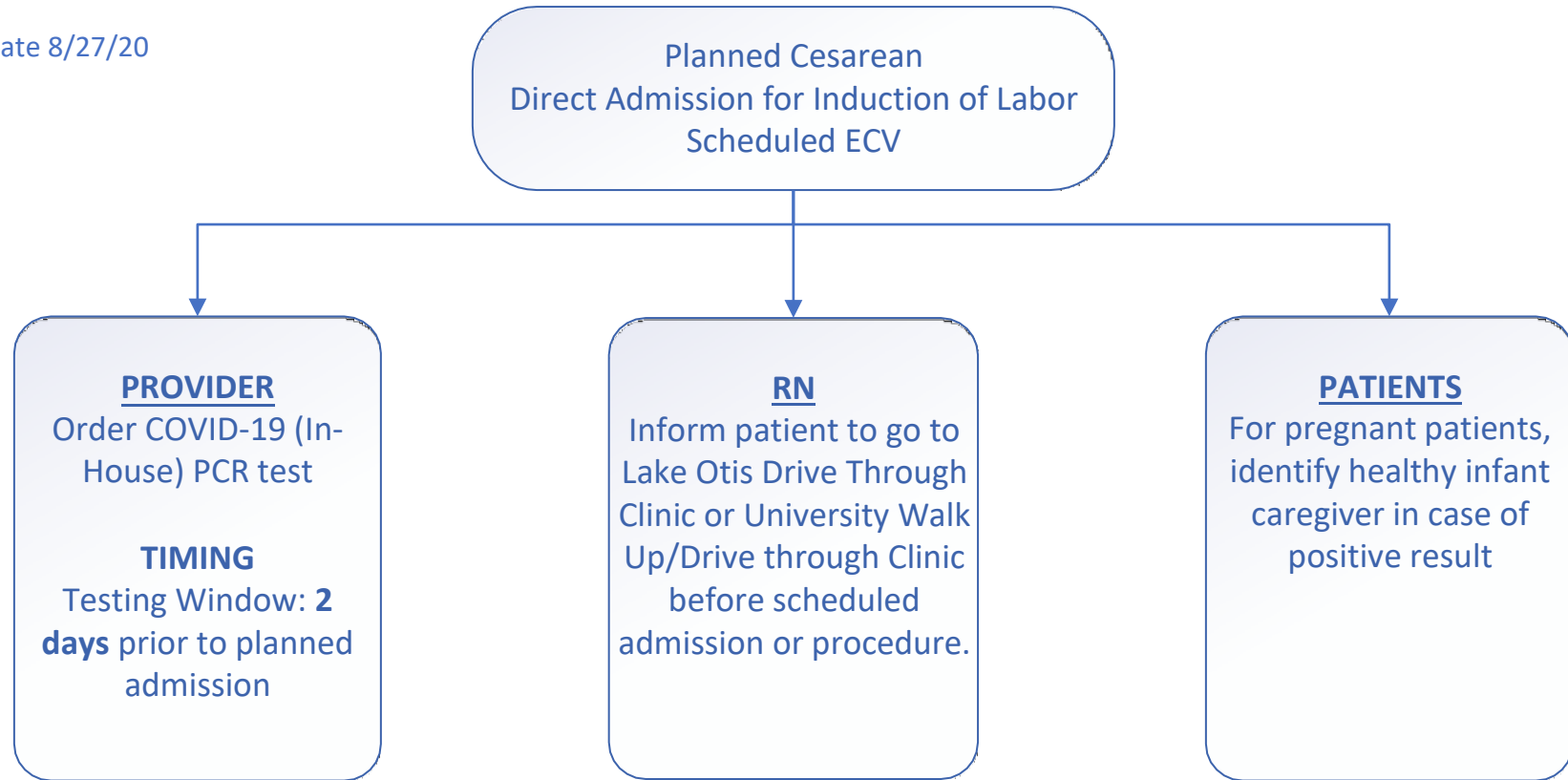
Intrapartum: Contact/droplet with mask, eye protection, face shield, gown, and gloves. Use labor room 4 if available.

Vaginal Delivery: Airborne N95 mask, eye protection, face shield, gown and gloves.

Cesarean Delivery
Airborne N95 mask, face shield, and gown.
Use C/S ROOM A and HEPA filter.

Outpatient COVID-19 Testing Prior to Planned Admission for Anticipated Procedure Population: **Asymptomatic** Pregnant Patients or Gynecologic Surgery Patients

Update 8/27/20



Outpatient Testing:

CO on campus testing: walk-up/drive through site
CO should tell the site this is a preoperative test so that there will be expedited results

CTP-A Guide: Management of Covid Test Pending- Asymptomatic (CTP-A)

Update 11/19/20

