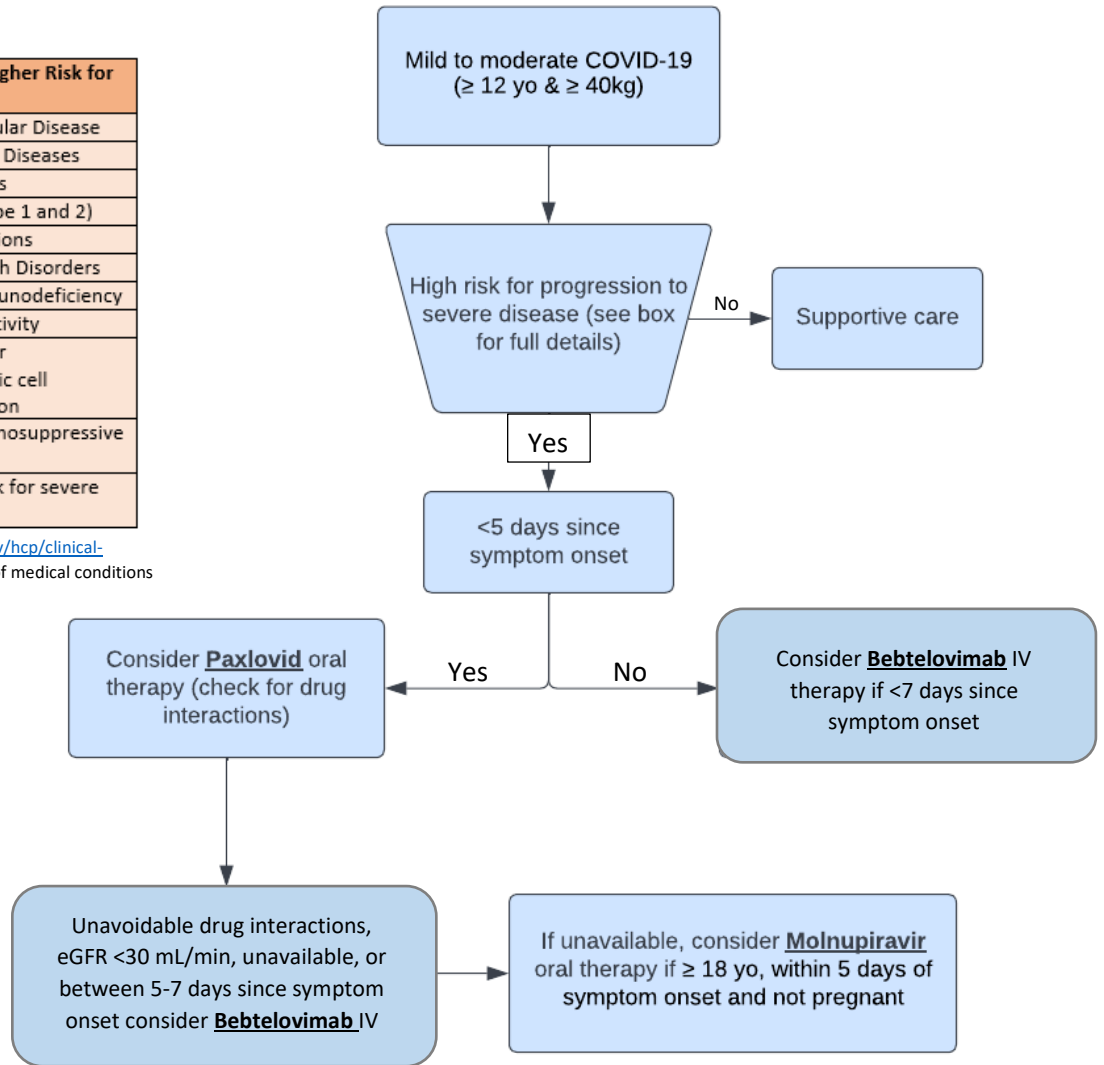


Outpatient COVID-19 Treatment Guidance

Medical Conditions Associated with Higher Risk for Severe COVID-19	
Cancer	Cerebrovascular Disease
Chronic Kidney Disease	Chronic Lung Diseases
Chronic Liver Diseases	Cystic Fibrosis
Dementia	Diabetes (Type 1 and 2)
Disabilities*	Heart Conditions
HIV	Mental Health Disorders
Obesity (BMI $\geq 30\text{kg/m}^2$)	Primary Immunodeficiency
Pregnancy	Physical inactivity
Smoking, current and former	Solid organ or hematopoietic cell transplantation
Tuberculosis	Use of immunosuppressive medications
Age >65 is generally regarded as high risk for severe COVID-19	

*See <https://www.cdc.gov/coronavirus/2019-ncov/hcp/clinical-care/underlyingconditions.html> for complete list of medical conditions



Treatment	Dose	Interactions	Special Considerations
Paxlovid (Nirmatrelvir & Ritonavir) <ul style="list-style-type: none"> Within 5 days of symptom onset 	<ul style="list-style-type: none"> Two 150 mg tablets (300 mg) nirmatrelvir with one 100 mg tablet ritonavir orally twice daily for 5 days (not to exceed these 5 days) 	<ul style="list-style-type: none"> Many specifically with CYP3A4, always check before dispensing Liverpool interaction checker: https://www.covid19-druginteractions.org/ 	Renal impairment: <ul style="list-style-type: none"> ≥ 30 to <60 mL/min: Nirmatrelvir 150 mg and ritonavir 100 mg twice daily <30 mL/min: Not recommended Hepatic impairment: <ul style="list-style-type: none"> Not recommended for severe hepatic impairment (Child-Pugh Class C) Pregnancy and Lactation: <ul style="list-style-type: none"> No available clinical data
Bebtelovimab <ul style="list-style-type: none"> Within 7 days of symptom onset 	<ul style="list-style-type: none"> 175 mg single IV infusion (over at least 30 seconds) 	<ul style="list-style-type: none"> Data limited at this time. 	Pregnancy and Lactation: <ul style="list-style-type: none"> One of the recommended agents in pregnant patients, no dose adjustment for breastfeeding
Molnupiravir <ul style="list-style-type: none"> Within 5 days of symptom onset ≥ 18 years old 	<ul style="list-style-type: none"> 800 mg (four 200 mg tablets) by mouth every 12 hours for 5 days (not to exceed 5 days) 	<ul style="list-style-type: none"> No drug-drug interactions identified at this time 	Pregnancy and Lactation: <ul style="list-style-type: none"> Females of childbearing age must use contraception during and for 4 days after use. Males must use contraception for at least 3 months after. Breastfeeding is not recommended during treatment and for 4 days after final dose.