

**Please put  
your name  
and  
community in  
the chat**

**River ice has  
lot of water on  
top of the ice.**

**Remind  
Julia to hit  
record**



# **Welcome to February's Webinar**

**Check the  
chat for  
the  
jamboard**

# Mindful Moment



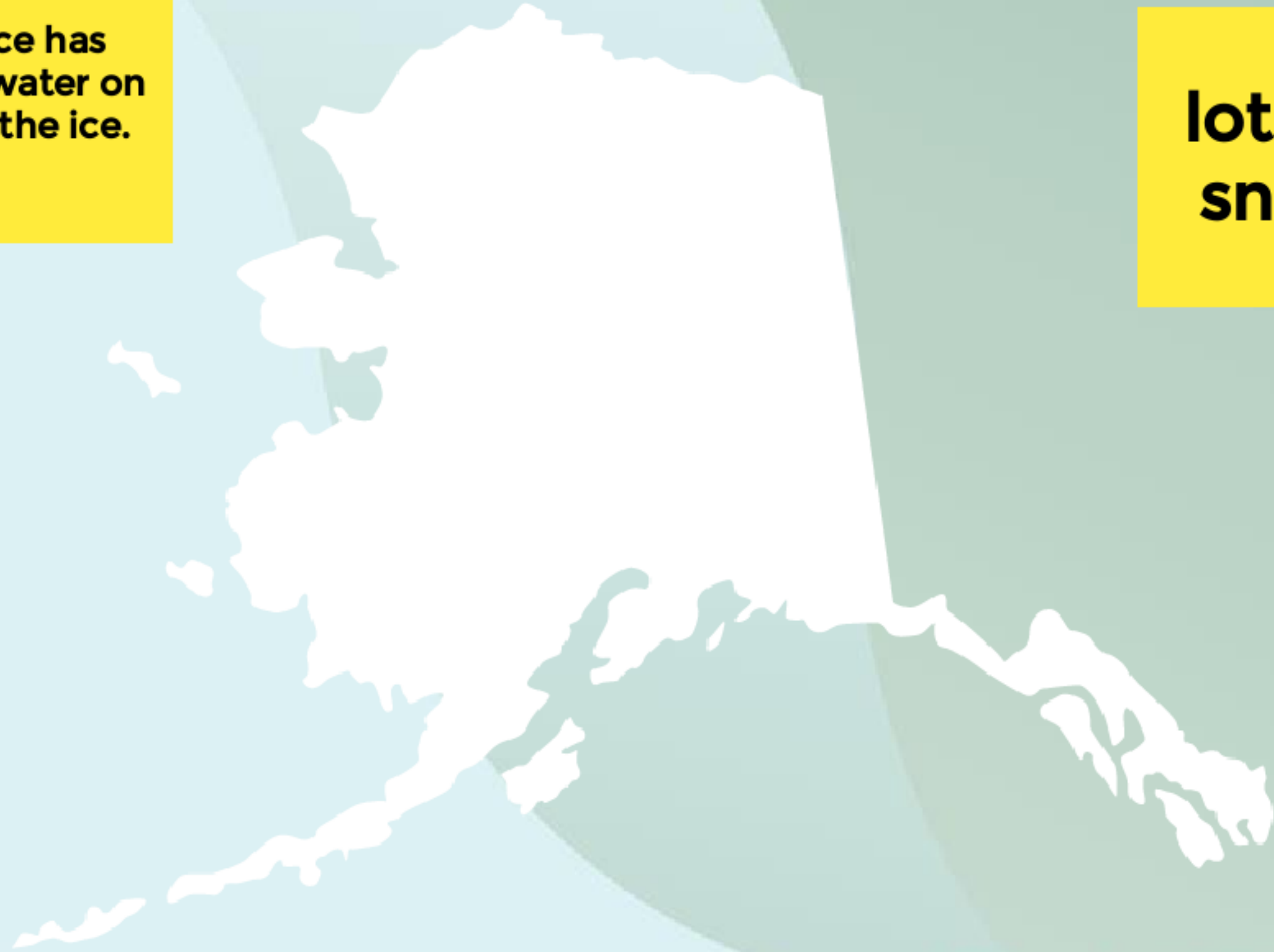
ALASKA NATIVE  
TRIBAL HEALTH  
CONSORTIUM

## ICE BREAKER

River ice has  
lot of water on  
top of the ice.

lots of  
snow

Where in  
the state  
has there  
been record  
snowfall  
this year?



ALASKA NATIVE  
TRIBAL HEALTH  
CONSORTIUM

# Agenda

## ANTHC Updates

- ATCEM Registration
- ANTHC Abstracts and Agenda
- Intro to IGAP Virtual February 23rd
- Calendar Invite
- No webinar in March

## Updates from EPA staff

- Negotiation Phase, What's next?
- EPA's Community Change Grants Program

## Presentation:

- How to Give Engaging and Interactive Presentations , Julia Salt, ANTHC

## Discussion:



ALASKA NATIVE  
TRIBAL HEALTH  
CONSORTIUM



# ANTHC Updates

- ATCEM Registration
  - ATCEM Abstracts and Agenda
  - Intro to IGAP Virtual February 23rd
    - Calendar Invite
    - No webinar in March



ALASKA NATIVE  
TRIBAL HEALTH  
CONSORTIUM

# EPA Updates

- Negotiation Phase, What's next?
- EPA's Community Change Grants Program,  
Alessandro Molina, EPA R10



# How to Give Engaging and Interactive Presentations -Julia Salt



ALASKA NATIVE  
TRIBAL HEALTH  
CONSORTIUM

**Please put  
your name  
and  
community in  
the chat**

**SEE YOU AT ATCEM!!**

**Next  
Webinar  
April 17th**

















